



## LightingRetrofit.com.au

Lightingretrofit is a newly formed Australian web based lighting company supplying energy efficient lighting solutions in the form of induction light fittings and re-lamping retrofit kits for Australian industry. We have no shop front and no traveling sales representatives which allows us to keep our costs down and pass these savings on to our customers. We invite an inspection of our website [www.lightingretrofit.com.au](http://www.lightingretrofit.com.au) for a more detailed look at our product range and prices along with handy cost savings calculators and other relevant industry information.

- With councils and various bodies across Australia in various stages of lighting efficiency and energy saving trials and Federal and State Government energy initiatives becoming mandatory rather than optional there is much work to be done to identify the best solution for your energy situation. Lightingretrofit would like to offer your organization access to discounted induction light fittings and retrofit kits to allow you to trial our induction technology, **the lowest lifetime cost of any lighting source.**
- There are two main advantages of induction lamps over MH (Metal Halide) and MV (Mercury Vapour) lamps. Firstly the extended lamp life and higher pupil lumens per watt output of the induction lamp will give a higher average lumen level over time, in turn creating an average 40% energy saving. Secondly the extended lamp life saves the costs and eliminates the risks involved with the extra lamp changes required for a MH or MV lamp solution to achieve the 100,000 hour lamp life of an induction fitting.
- There are three main advantages of induction lamps over LED lamps. Firstly the extended lamp life of 100,000 hours for separate ballasted fittings and 60,000 hours for self ballasted lamps is proven and is substantially higher than the new LED technologies which are being sold on theoretical lamp life estimates. Secondly the cost of a new induction fitting is much lower than an equivalent wattage LED fitting. Finally LED lamps can not be fitted into existing lamp housings. Induction retrofit kits can be fitted to most existing highbay and street light housings as part of the normal re-lamping maintenance program, extending the life of existing infrastructure and saving the substantial costs associated with installing new lighting infrastructure.
- See **Table 1 - General Features Comparison Chart.**
- See **Table 2 – Highbay Performance Comparison Chart.**
- See **Table 3 - Maintenance Costs calculator sheet** from the [lightingretrofit.com.au](http://lightingretrofit.com.au) website for a lifetime light costing comparison.

**Table 1 - General Features Comparison Chart.**

Feature	Induction	Metal Halide	Mercury Vapour	High Pressure Sodium
Life Hours	60,000 - 100,000	10,000 – 20,000	15,000 – 25,000	15,000 – 25,000
Re-strike	Instant	5~15 minutes	5~15 minutes	5~15 minutes
Lamp Operating Temperature	<80°F Reduces A/C cost	>300° F Increased A/C cost	>300° F Increased A/C cost	>350° F Increased A/C cost
Colour Render Index (Ra)	Approx. 80	Approx. 75	Approx. 50	Approx. 60
Colour Temperature (K)	3000 - 6500	3000 - 5000	3900 - 4200	2000 - 2200
Flicker	No	Yes	Yes	Yes
Glare	No	Yes	Yes	Yes

**Table 2 – Highbay Lamp Comparison Chart**

Light Source	Lumens output	S/P ratio calculation	Initial Total (Plm)	Lumen Depreciation rate at 2,000hr (%)	Total at 2,000hr (Plm/w)	Lumen Depreciation rate at 16000hr (%)	Total at 16,000hr (Plm/w) average	Rated lamp life (hrs)
150W Induction	12,300	1.96	24,110	3	23,387	10	21,700	100,000
250W Metal Halide	20,000	1.49	29,080	20	23,264	30-40	14,540	20,000
150W LED	12,000	1.8	21,600	3	20,950	10	19,440	50,000
250W Induction	20,500	1.96	40,180	3	38,975	10	36,162	100,000
400W Metal Halide	32,000	1.49	47,680	20	38,144	30-40	23,840	20,000
200W LED	15,000	1.8	27,000	3	26,190	10	24,300	50,000

**NOTES:**

- Induction and Metal Halide lamps can, in most cases be retrofitted into existing lamp housings.
- S/P ratio is an increasingly accepted International Standard method for measuring actual useable light.
- LED lamps cannot be retrofitted to existing housings, they must be purchased and installed complete.
- LED lamp life is based on theoretical life, as an emerging technology they have not been fully tested to 50,000 hours (approx 6 years continuous). High quality white LED fittings will cost in excess of \$800
- Induction lamp life is proven with some US military and power company installations having lamps still running at over 70% lumen output in excess of 100,000 hours

**Table 3 - Maintenance Cost Calculator**

	150W Induction lamp	250W Metal Halide	250W HPS
RATED LAMP LIFE	100,000	20,000	25,000
RUN HOURS PER DAY	12	12	12
LAMP COST (Induction fitting includes electronic balast)	180	90	70
<b>10 YEAR TOTAL LAMP COST</b>	<b>78.80</b>	<b>197.00</b>	<b>122.60</b>
LAMP CHANGE LABOUR TIME IN MINUTES (Time included for preparation, Permit to Work, Job Safety Analysis, etc for 2 men and a boom lift)	30	30	30
LABOUR RATE	200	200	200
<b>PER LAMP CHANGE LABOUR COST</b>	<b>100</b>	<b>100</b>	<b>100</b>
<b>10 YEAR TOTAL LAMP CHANGE LABOUR COST</b>	<b>43.80</b>	<b>219.00</b>	<b>175.20</b>
<b>10 YEAR TOTAL PER FITTING COST</b>	<b>122.65</b>	<b>416.10</b>	<b>317.55</b>
NUMBER OF FITTINGS	10	10	10
<b>TOTAL 10 YEAR LIGHTING MAINTENANCE COST</b>	<b>1226.50</b>	<b>4161.00</b>	<b>3175.50</b>

Temtrol Technologies  
 108 Victoria Street  
 Georgetown, Tas, 7253  
[sales@temtrol.com.au](mailto:sales@temtrol.com.au)  
 Phone 03 6382 4144

# RETROFIT KITS



LRF-GR (E40base)



LRF801 (E40 & E27 base)

Item	Price
LRF801-40W (E27)	\$89.00 +GST *
LRF801-50W (E27)	\$99.00 +GST *
LRF801-80W (E40)	\$129.00 +GST *
LRF-GR80W	\$149.00 +GST *
LRF-GR120W	\$169.00 +GST *
LRF-GR150W	\$189.00 +GST *
LRF-GR200W	\$199.00 +GST *
LRF-GR250W	\$209.00 +GST *
LRF-GR300W	\$219.00 +GST *

\* prices as at 31/10/2011 are subject to change on order size and currency fluctuations.

## Features:

- Instant start and restart.
- Very high Pupil Lumens ( Photopic Efficacy Plm).
- Long lifespan.
- High power factor, PF>0.99.
- No flicker, no glare, low operating temperature.
- High luminous maintenance rate (>95% after 2,000 hr and >85% after 20,000 hr and still >70% up to 100,000 hr)
- Quick and easy changeout.
- Two year parts warranty.

## HIGHBAY LIGHT FITTINGS (AVAILABLE IN SIZES FROM 80-300WATT)

### Features:

- Instant start and restart.
- Very high Pupil Lumens (Photopic Efficacy Plm).
- Long lifespan.
- High power factor, PF>0.99.
- No flicker, no glare, low operating temperature.
- High luminous maintenance rate (>85% after 20,000 hr and still >70% up to 100,000 hr)
- Quick and easy changeout.
- Two year parts warranty.

### Details:

- Fixture can be mounted with loop hook or suspended with chain.
- IP65 aluminium die casting gear box with powder coating, rustproof and corrosion-resistant.
- Aluminium lamp shade, aesthetic and durable.
- Optional acrylic or glass bottom cover.
- Polycarbonate lamp shade, aesthetic, light weight and durable.
- Protection for ballast from short-circuit, open-circuit and defective lamp.
- Application: Stadium, workshop, warehouse, airport, railway station, gas station, amusement park, exhibition hall, supermarket, etc.
- Dimension: Diameter 51.5 x Height 46 CM.

**Type: LRF101**



**Type: LRF103**



**Type: LRF110**



Item	Price	Item	Price	Item	Price
LRF101-120W	\$289.00 +GST *	LRF103-120W	\$299.00 +GST *	LRF110-120W	\$309.00 +GST *
LRF101-150W	\$299.00 +GST *	LRF103-150W	\$309.00 +GST *	LRF110-150W	\$319.00 +GST *
LRF101-200W	\$309.00 +GST *	LRF103-200W	\$319.00 +GST *	LRF110-200W	\$329.00 +GST *
LRF101-300W	\$329.00 +GST *	LRF103-300W	\$339.00 +GST *	LRF110-300W	\$349.00 +GST *

\* prices as at 31/10/2011 are subject to change on order size and currency fluctuations.

## STREET LIGHT FITTINGS (AVAILABLE IN SIZES FROM 40-300WATT)

### Features:

- Instant start and restart.
- Very high Pupil Lumens (Photopic Efficacy Plm).
- Long lifespan.
- High power factor, PF>0.99.
- No flicker, no glare, low operating temperature.
- High luminous maintenance rate (>85% after 20,000 hr and still >70% up to 100,000 hr)
- Quick and easy changeout.
- Two year parts warranty.

### Details:

- Toughened glass lamp mask, with high light transmission.
- Professionally designed Aluminum Reflector with excellent light reflection.
- Aluminum die cast lamp shell surface is put through Sand Projectile Processing with the outer shell processed with Polyester Powder coating.
- Shock resistant, rust-proof and durable.
- High temperature resistant silicon rubber air tight seal ensures high IP65 rating.
- Protection for ballast from short-circuit, open-circuit and defective lamp.
- Application: Roadways, parks, parking lots, etc.
- Dimension: Length 85cm x Width 40cm x Height 28cm



**Type: LRF212**



**Type: LRF201**



**Type: LRF202**

Item	Price	Item	Price	Item	Price
LRF212-150W	\$329.00 +GST *	LRF201-80W	\$279.00 +GST *	LRF202-80W	\$279.00 +GST *
LRF212-200W	\$349.00 +GST *	LRF201-120W	\$299.00 +GST *	LRF202-100W	\$289.00 +GST *
LRF212-250W	\$369.00 +GST *	LRF201-150W	\$319.00 +GST *	LRF202-120W	\$299.00 +GST *
LRF212-300W	\$389.00 +GST *	LRF201-200W	\$339.00 +GST *	LRF202-150W	\$319.00 +GST *

\* prices as at 31/10/2011 are subject to change on order size and currency fluctuations.

## FLOOD LIGHT FITTINGS (AVAILABLE IN SIZES FROM 80-300WATT)

### Features:

- Instant start and restart.
- Very high Pupil Lumens ( Photopic Efficacy Plm).
- Long lifespan.
- High power factor, PF>0.99.
- No flicker, no glare, low operating temperature.
- High luminous maintenance rate (>85% after 20,000 hr and still >70% up to 100,000 hr)
- Quick and easy changeout.
- Two year parts warranty.

### Details:

- Toughened glass lamp mask, with high light transmission.
- Professionally designed Aluminum Reflector with excellent light reflection.
- Aluminum die cast lamp shell surface is powder coated.
- Shock resistant, rust-proof and durable.
- High temperature resistant silicon rubber air tight seal ensures high IP65 rating.
- Ballast is protected from open-circuit, short-circuit.
- Application: Billboards, buildings, shops, parking lots, outdoor sports, ect.
- Size: Length 72cm x Width 48cm x Height 48cm (304), Length 43cm x Width 43cm x Height 15cm (303)

**Type : LRF304**



Item	Price
LRF304-100W	\$279.00 +GST *
LRF304-150W	\$299.00 +GST *
LRF304-200W	\$309.00 +GST *
LRF304-300W	\$329.00 +GST *

**Type : LRF303**



Item	Price
LRF303-80W	\$279.00 +GST *
LRF303-100W	\$299.00 +GST *
LRF303-150W	\$319.00 +GST *
LRF303-200W	\$329.00 +GST *

\* prices as at 31/10/2011 are subject to change on order size and currency fluctuations.

## CEILING LIGHT FITTINGS

### Features:

- Instant start and restart.
- Very high Pupil Lumens ( Photopic Efficacy Plm).
- Long lifespan.
- High power factor, PF>0.99.
- No flicker, no glare, low operating temperature.
- High luminous maintenance rate (>85% after 20,000 hr and still >70% up to 100,000 hr)
- Light weight, easy installation and maintenance.
- Two year parts warranty.

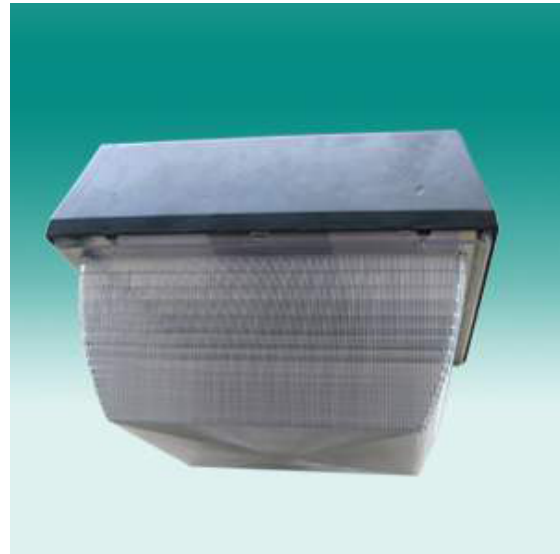
### Details:

- Aluminum die cast lamp shell surface is powder coated.
- Shock resistant, rust-proof and durable.
- High temperature resistant and UV proof polycarbonate diffuser.
- Ballast is protected from open-circuit, short-circuit.
- Application: Garage, warehouse, parking lots, service stations, ect.
- Size: Diameter 33cm x Height 22cm / 28cm x Width 28cm x Height 23cm

### Type : LRF602



### Type : LRF601



Item	Price
LRF602-40W	\$149.00 +GST *
LRF602-80W	\$179.00 +GST *
LRF602-100W	\$189.00 +GST *
LRF602-120W	\$199.00 +GST *

Item	Price
LRF601-40W	\$149.00 +GST *
LRF601-80W	\$179.00 +GST *
LRF601-100W	\$189.00 +GST *

\* prices as at 31/10/2011 are subject to change on order size and currency fluctuations.

## TUNNEL LIGHT FITTING

### Features:

- Instant start and restart.
- Very high Pupil Lumens ( Photopic Efficacy Plm).
- Long lifespan.
- High power factor, PF>0.99.
- No flicker, no glare, low operating temperature.
- High luminous maintenance rate (>85% after 20,000 hr and still >70% up to 100,000 hr)
- Quick and easy changeout.
- Two year parts warranty.

### Details:

- Toughened glass or polycarbonate cover, with high light transmission.
- Aluminum Reflector with excellent light reflection.
- Welded aluminum lamp shell surface is powder coated.
- Shock resistant, rust-proof and durable.
- High temperature resistant silicon rubber air tight seal ensures high IP65 rating.
- Ballast is protected from open-circuit, short-circuit.
- Application: Tunnel, freeway, large warehouse, parking lots, etc.
- Size: Length 68cm x Width 30.5cm x Height 14cm.

**Type : LRF403**



Item	Price
LRF403-120W	\$309.00 +GST *
LRF403-150W	\$319.00 +GST *
LRF403-200W	\$329.00 +GST *

\* prices as at 31/10/2011 are subject to change on order size and currency fluctuations.

## WALL LIGHT

### Features:

- Instant start and restart.
- Very high Pupil Lumens ( Photopic Efficacy Plm).
- Long lifespan.
- High power factor, PF>0.99.
- No flicker, no glare, low operating temperature.
- High luminous maintenance rate (>85% after 20,000 hr and still >70% up to 100,000 hr)
- Light weight, easy installation and maintenance.
- Two year parts warranty.

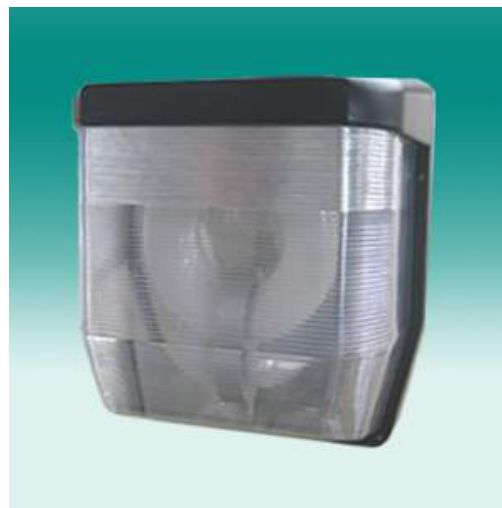
### Details:

- Aluminum die cast lamp shell surface is powder coated.
- Shock resistant, rust-proof and durable.
- High temperature resistant and UV proof polycarbonate diffuser.
- Ballast is protected from open-circuit, short-circuit.
- Application: Garage, warehouse, parking lots, walkways, etc.
- Size: Length 27.5cm x Width 24.5cm x Height 19cm



**Type : LRF501**

Item	Price
LRF501-40W	\$129.00 +GST *



**Type : LRF502**

Item	Price
LRF502-40W	\$129.00 +GST *

\* prices as at 31/10/2011 are subject to change on order size and currency fluctuations.